



MANUFACTURING™  
TECHNOLOGY SERIES 2025

# 2025 POST-EVENT AUDIENCE REPORT

**October 21-23, 2025**

Greenville Convention Center

FEATURING: **southtec®**

SMART MANUFACTURING  
EXPERIENCE

sme  **brightminds**

 **SECURE  
SHOP**

# SOUTHEAST

[southeast.mtseries.com](https://southeast.mtseries.com)

sme  **AMT**



# POST SHOW REPORT

## AUDIENCE NUMBERS

**5,000** TOTAL ATTENDANCE

**215** NEW PRODUCT  
DISPLAYS

**300** TOTAL EXHIBITING  
COMPANIES

**25** NUMBER OF  
SPEAKERS

**68,000** TOTAL EVENT  
SQ. FT.

**15,200** LEADS SCANNED

**24** HOURS OF  
EDUCATIONAL  
CONTENT

## STATES REPRESENTED



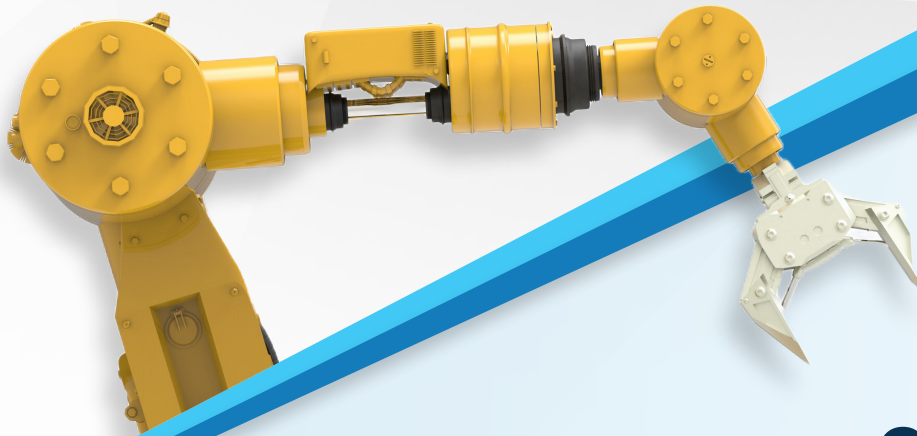
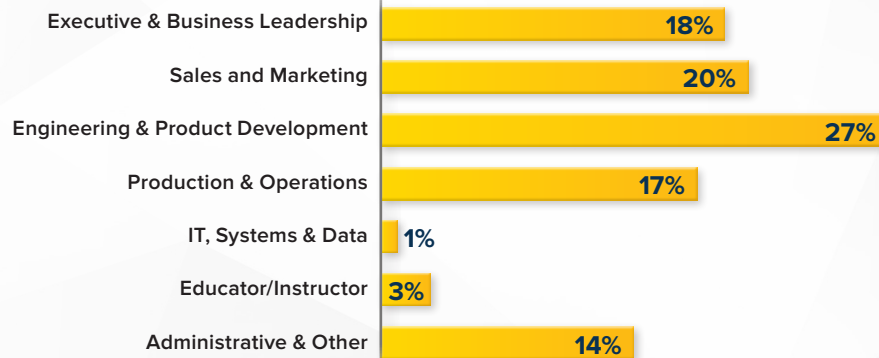
**87%** Southeastern Region

**12%** Northeastern Region

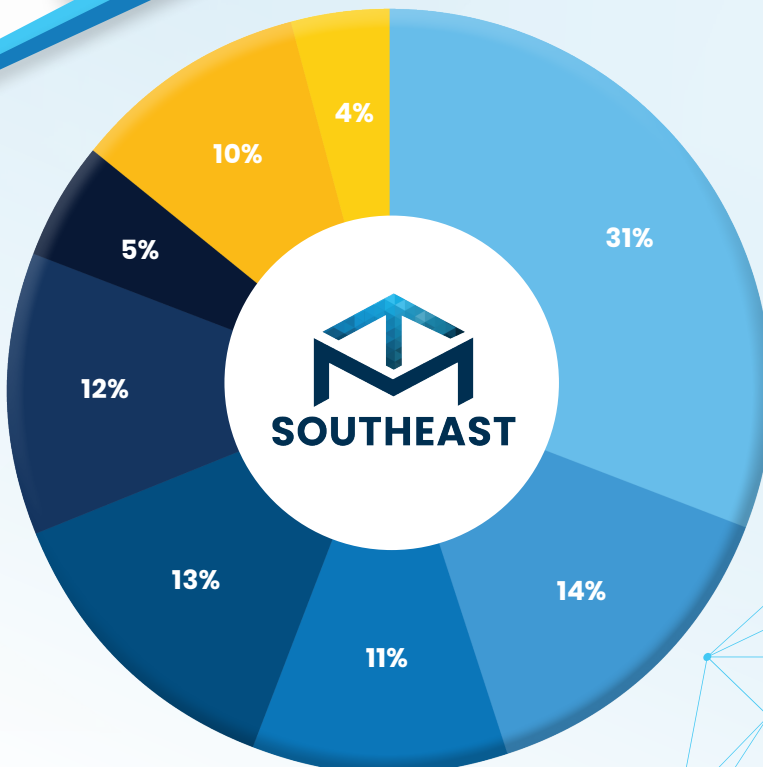
**1%** Other Regions



# JOB FUNCTIONS



## COMPANY SIZE NUMBER OF EMPLOYEES



- Less than 20
- 20 - 49
- 50 - 99
- 100 - 249
- 250 - 499
- 500 - 999
- 1000 - 2499
- 2500 - Over



# TOP TECHNOLOGIES **EVALUATED**

CNC Controls & Software

Automated Manufacturing & Assembly

Cutting Tools & Accessories

3D Printing & Additive Manufacturing

Tooling

Milling Processes & Machining Centers

Drilling & Tapping

Robotics, Cobots & AGVs

Measurement, Inspection & Quality

Lean Manufacturing



## PRIMARY BUSINESS AREA – ATTENDEES



Aerospace & Defense



Automotive & Transportation



Consulting & Engineering



Education & Research



Electronics & Technology



Manufacturing & Materials



Medical & Life Sciences



Services & Business



# TOP ATTENDING COMPANIES



Amsted Rail

BorgWarner

BWX Technologies

Caterpillar

CBS Marketing Solutions

CeramTec

Dodge Industrial

Dodge Mechanical Power  
Transmission

DRT Aerospace

Eaton

Faircloth Machine

Faircloth Machine Shop

FANUC America

Fox Factory

GE Aerospace

GE Vernova

Hendrick Motorsports

Innovative Manufacturing  
and Design

IPG

JM Mold South

Lockheed Martin

Max Tool

Michelin

Morgan Advanced Materials

Pol Tech Machining

Precision Tools Service

PT Solutions

RBC Aerostructures

Robert Bosch

SEW-Eurodrive

Software Toolbox

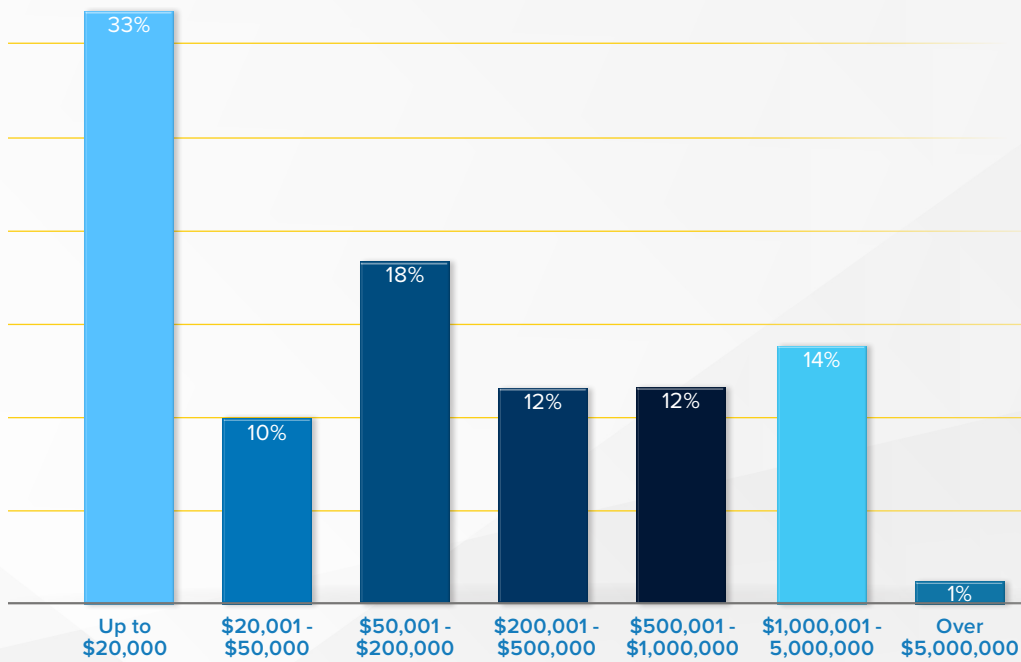
The Williams

Wyoming Machine





## PURCHASING POWER



**65%**

of attendees have direct influence  
on purchasing decisions.

**39%**

of attendees have purchasing  
budgets exceeding \$200,000.

**59%**

of attendees were  
first-time participants.







**MANUFACTURING  
TECHNOLOGY SERIES**

**WILL BE BACK IN 2027**

**SAVE THE DATE!**

**October 19–21, 2027**

See You in Greenville, South Carolina!

[southeast.mtseries.com](https://southeast.mtseries.com)

2027



Scan the QR code  
to get started

